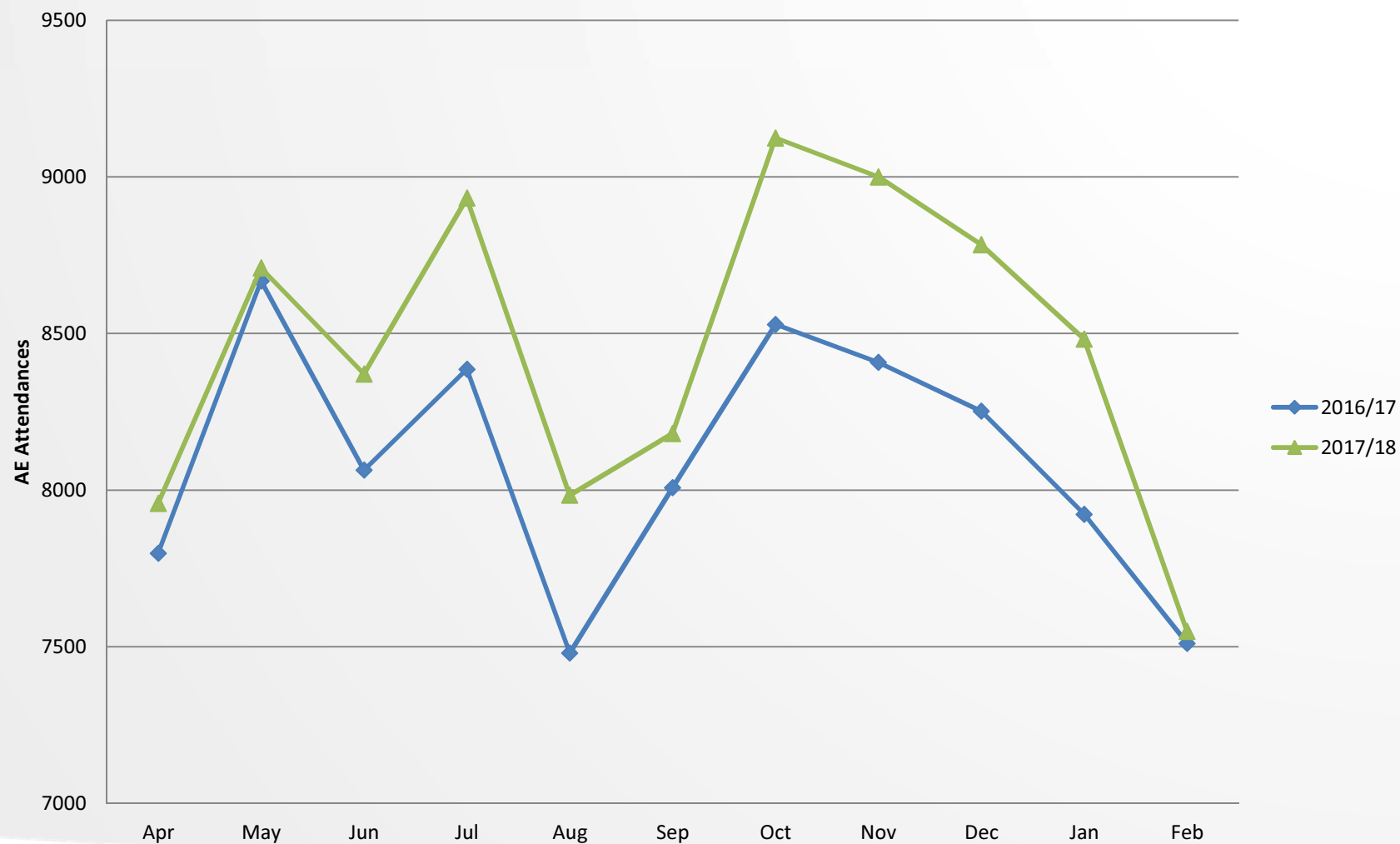


NMCO Winter Pressures 2017/18

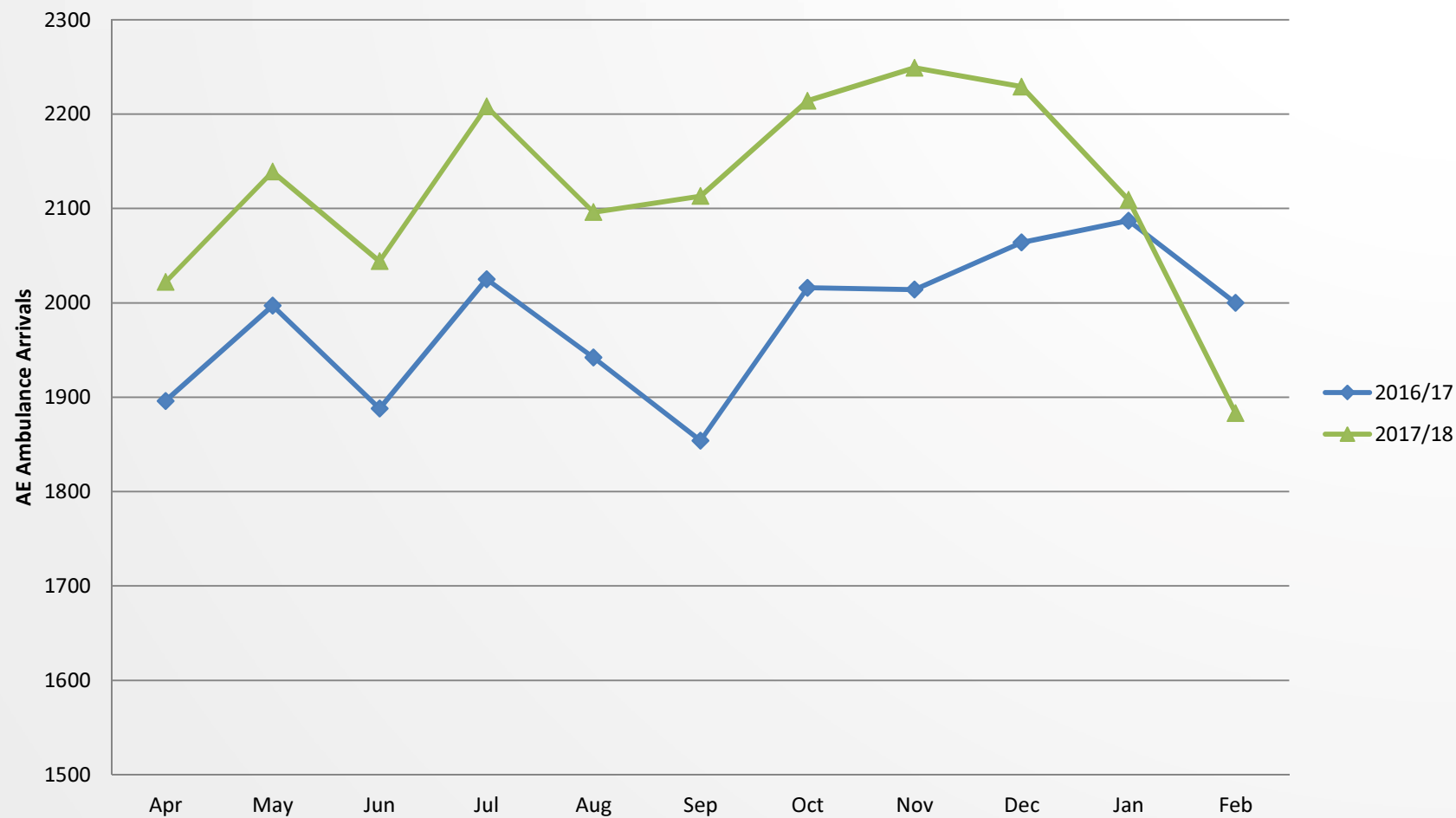
Actions

- Director led daily oversight of capacity, demand and performance and required actions
- Ongoing evaluation of primary care streaming and Same Day Care operating model
- Continued improvement in number of 12 hour trolley waits when compared to previous year
- Launch of “Making safety visible” - Quality Improvement across systems and processes including ED work streams
- Expansion of Acute Medical Unit

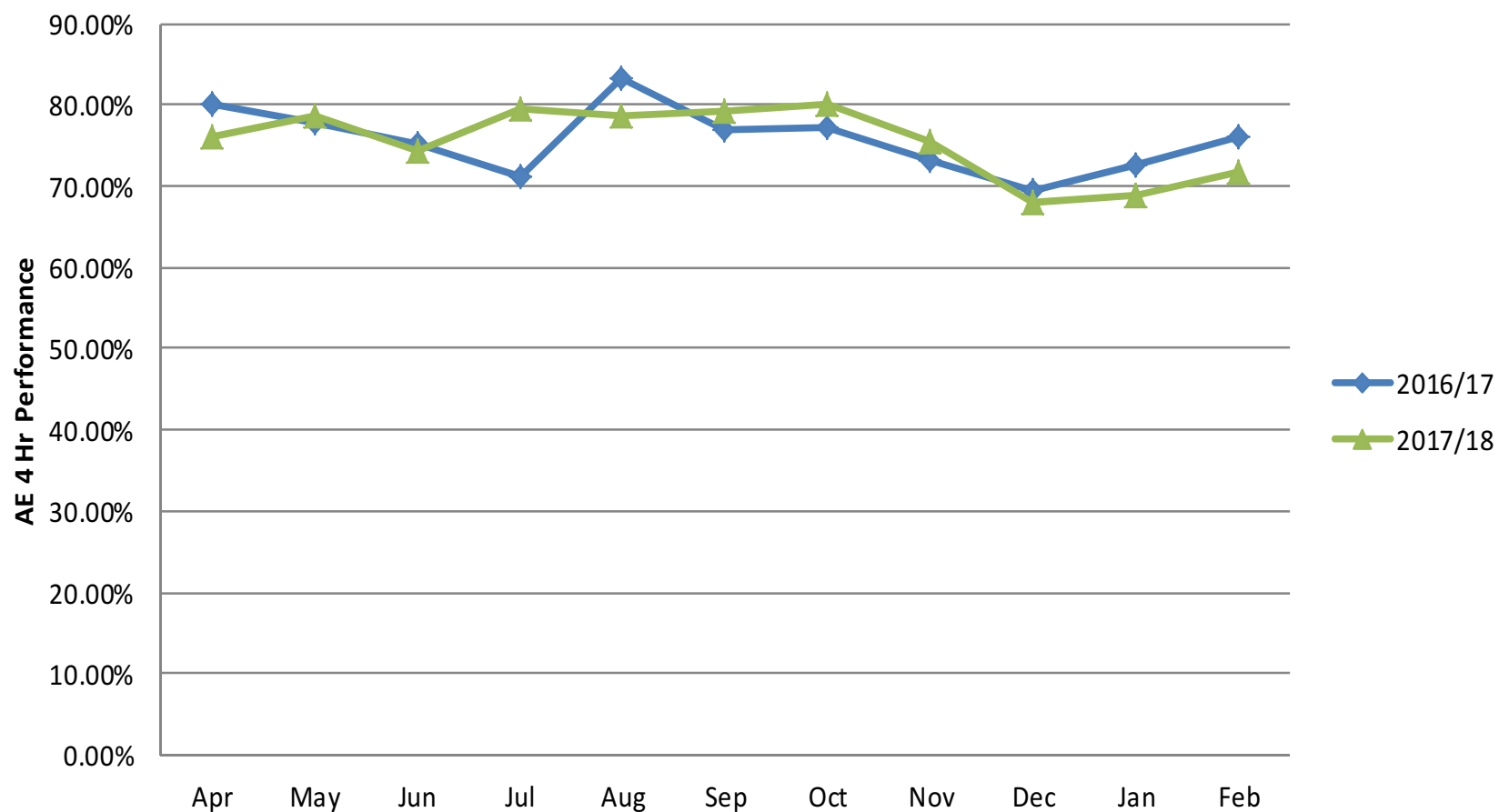
NMGH AE ATTENDANCES



NMGH AE AMBULANCE ARRIVALS



NMGH AE 4 Hr Performance



NMGH AE 12 Hr Trolley Waits

